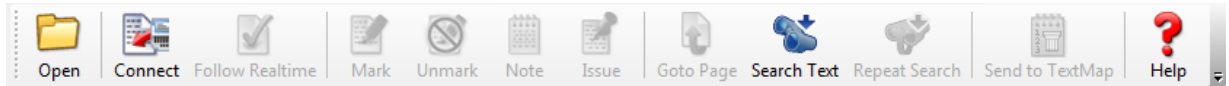


Using CaseViewNet via Serial Connection

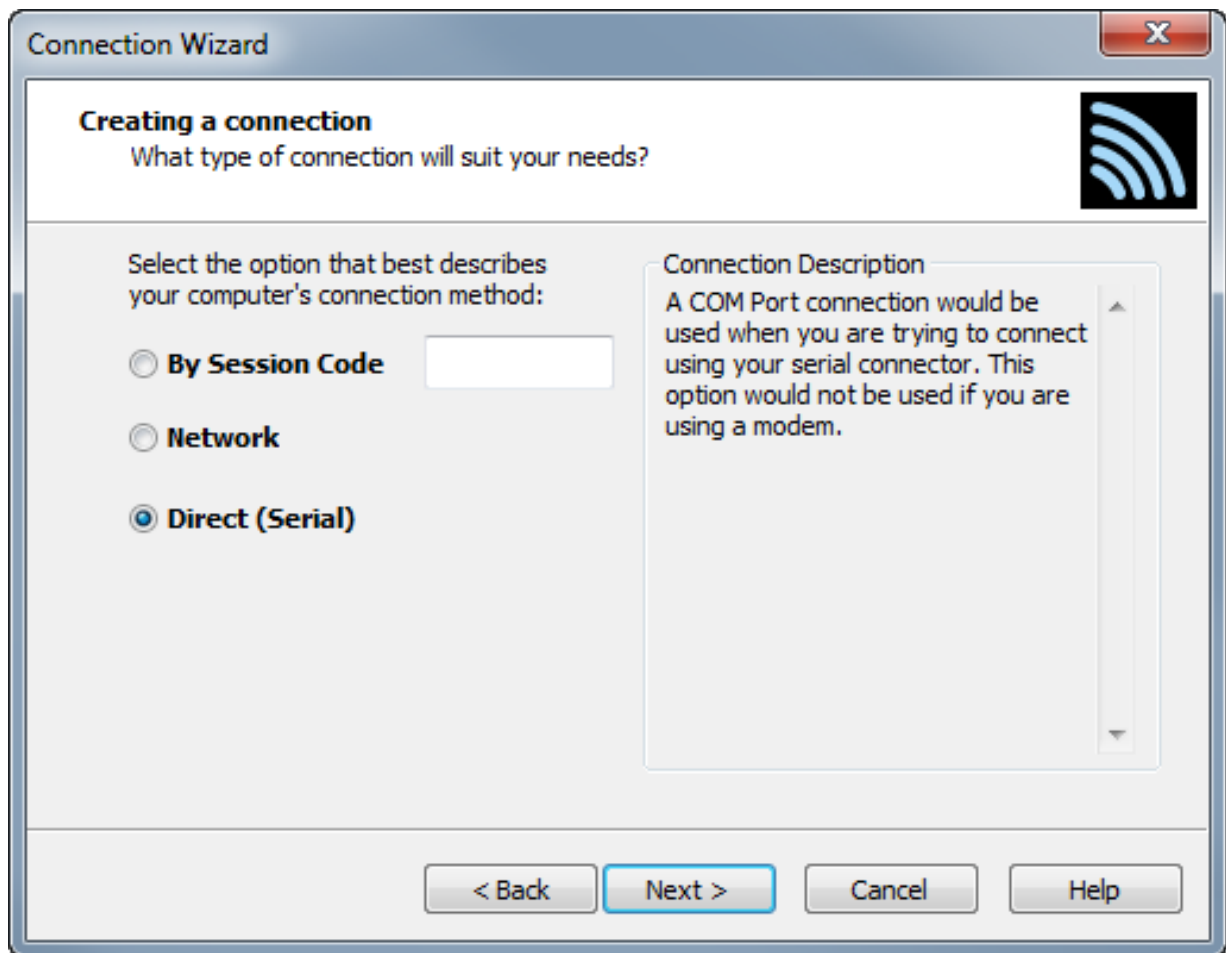
1. Open the CaseViewNet and left click the **Connect (Alt-r, c)**



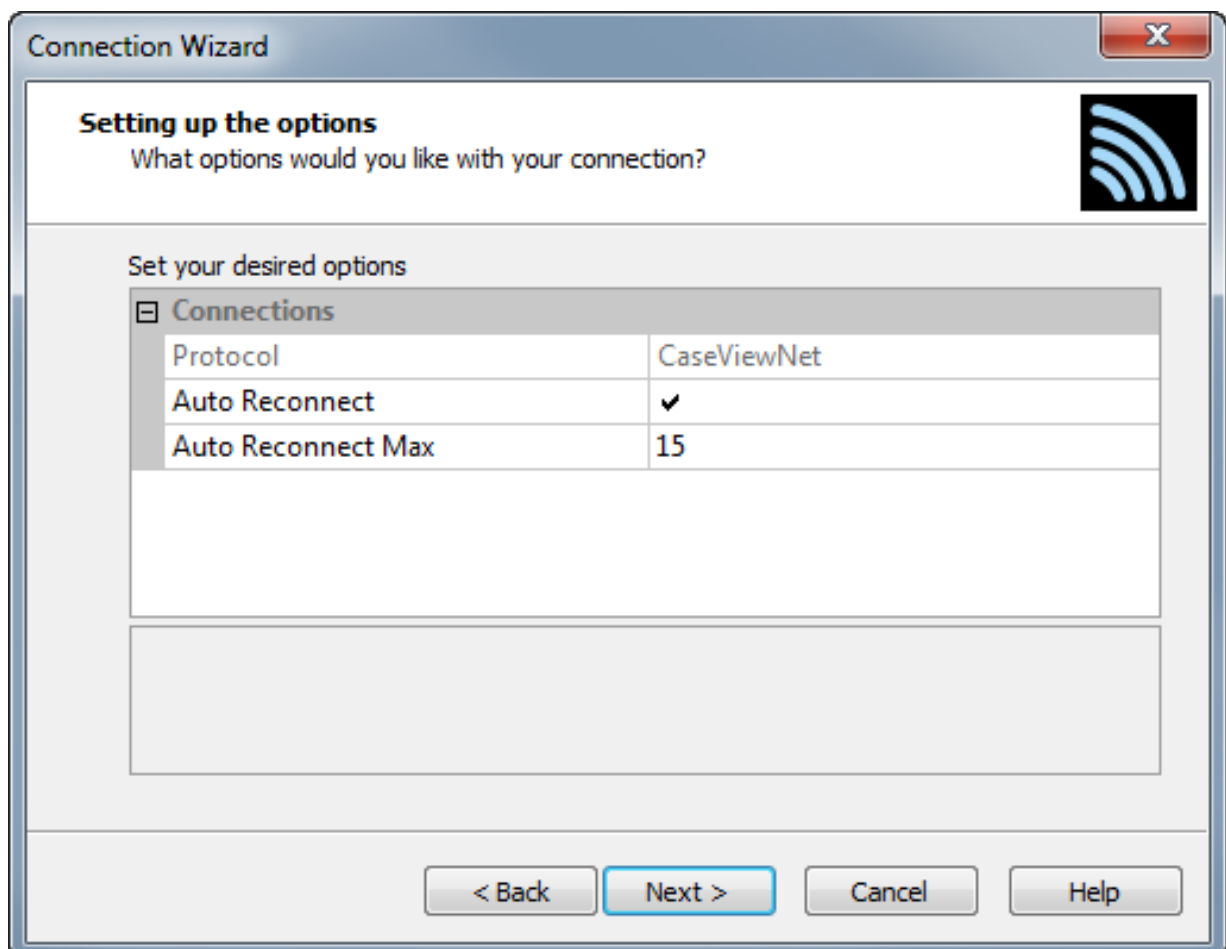
2. The Welcome to the Connection Wizard will appear. Click **Next**.



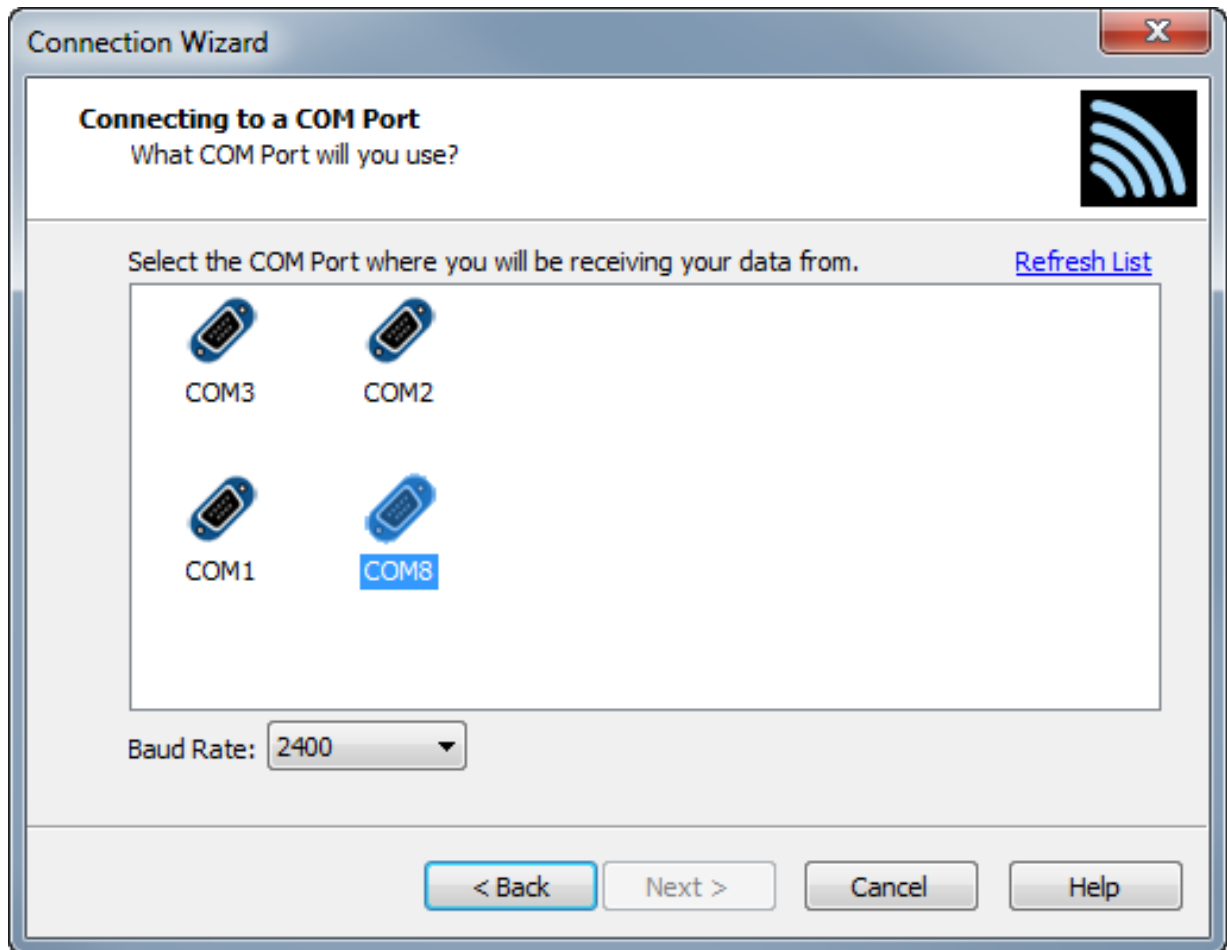
3. In the Creating a connection screen, select Direct (Serial) and click **Next**.



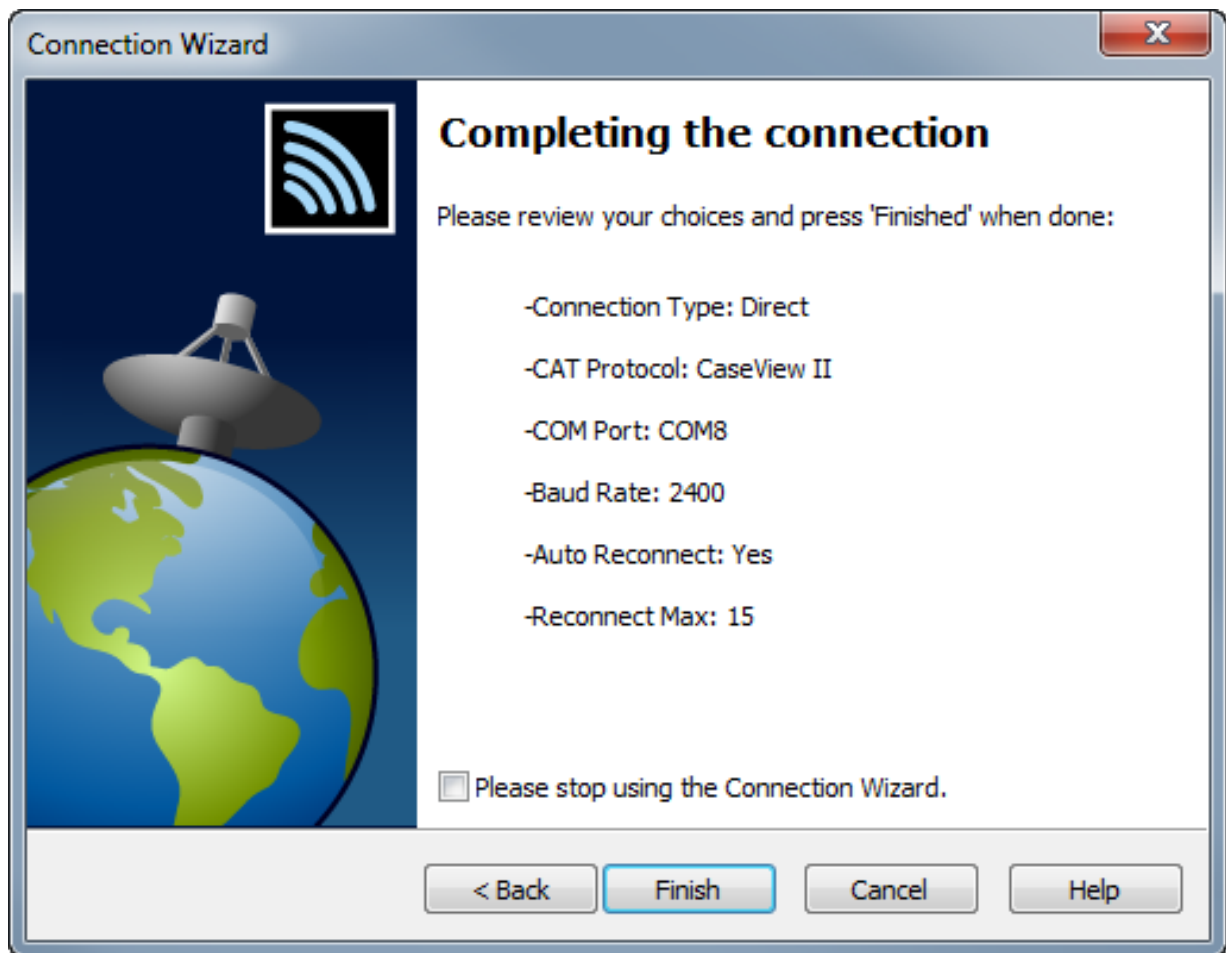
4. Click **Next** at the Setting up your options screen.



5. Select the COM port assigned to the computer and click **Next**.



6. Click **Finish** at the Completing the connection screen.



7. The wizard will close and CaseViewNet will be receiving the feed.

Troubleshooting Tips

- Verify the COM port in [Device Manager](#).
- Reboot the computer, and run the connection wizard again.

Article ID: 71

Last updated: 07 Oct, 2014

Revision: 2

Caseview/CaseViewNet -> CaseViewNet -> Using CaseViewNet via Serial Connection

<http://www.stenographsolutions.com/solution/index.php?View=entry&EntryID=71>