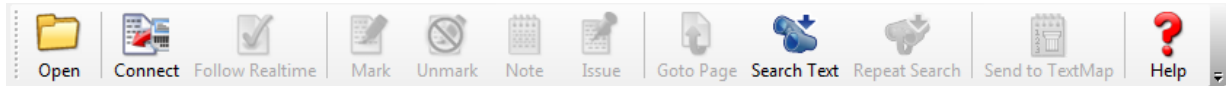


Using CaseViewNet via Network Connection

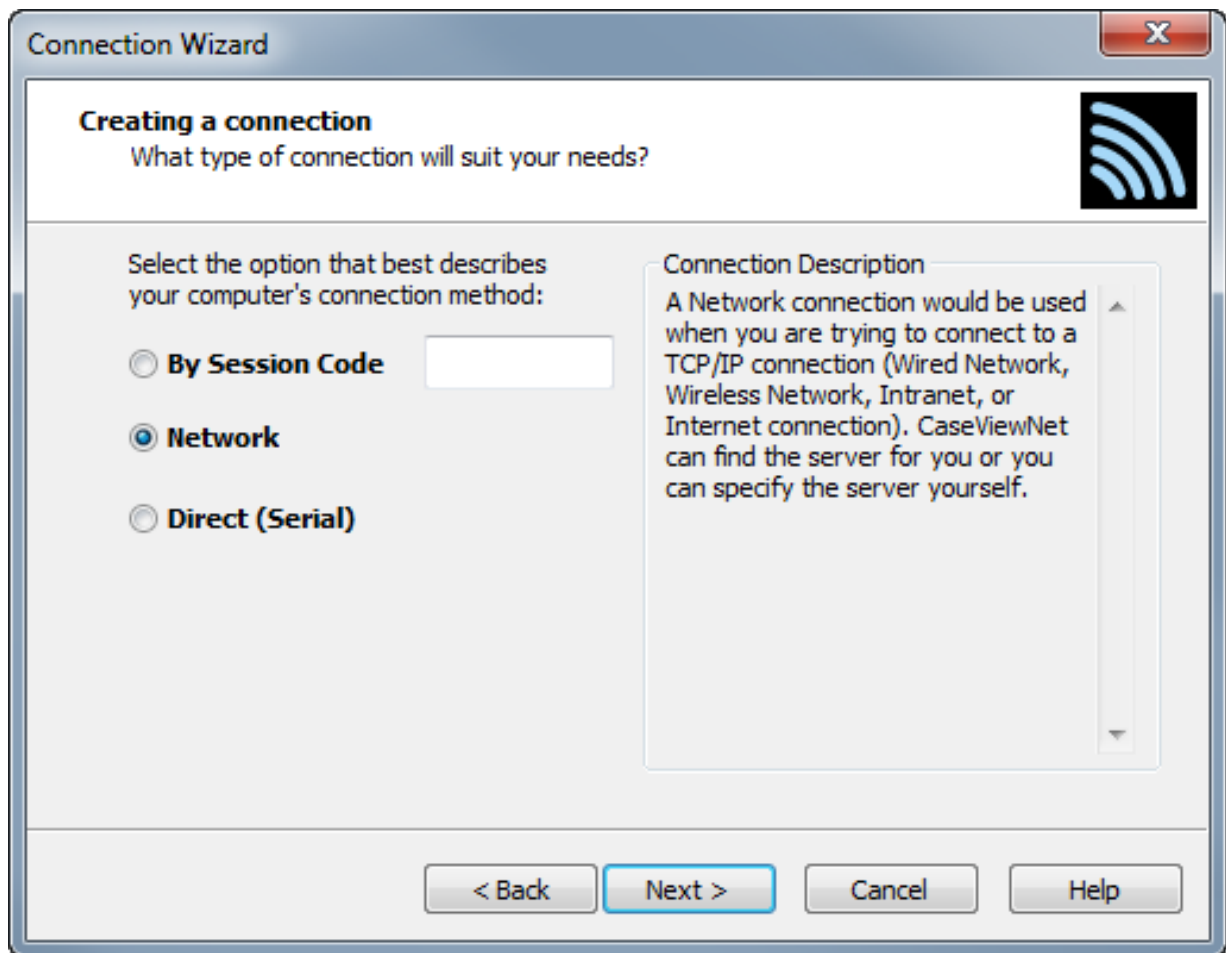
1. Open the CaseViewNet and left click the **Connect (Alt-r, c)**



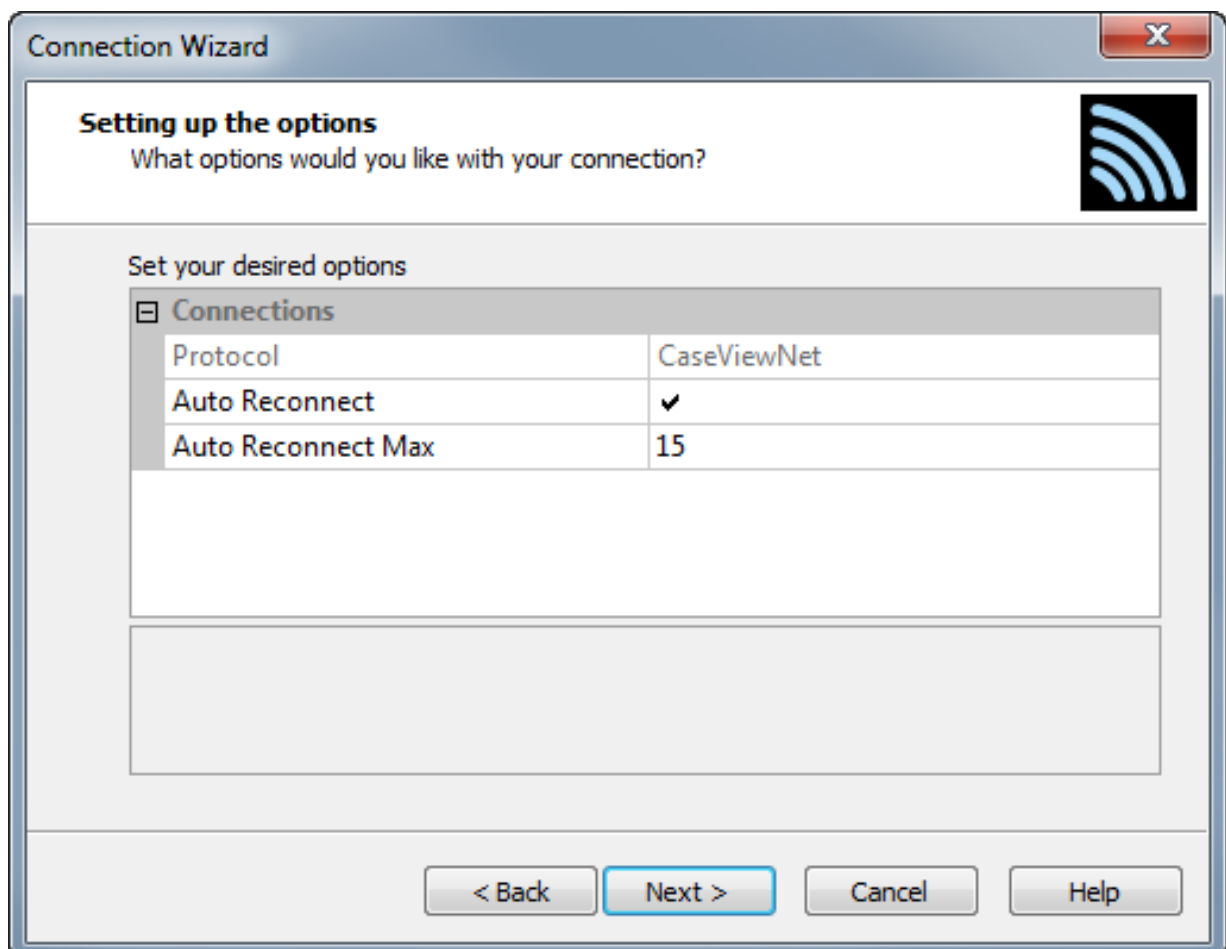
2. The Welcome to the Connection Wizard will appear. Click **Next**.



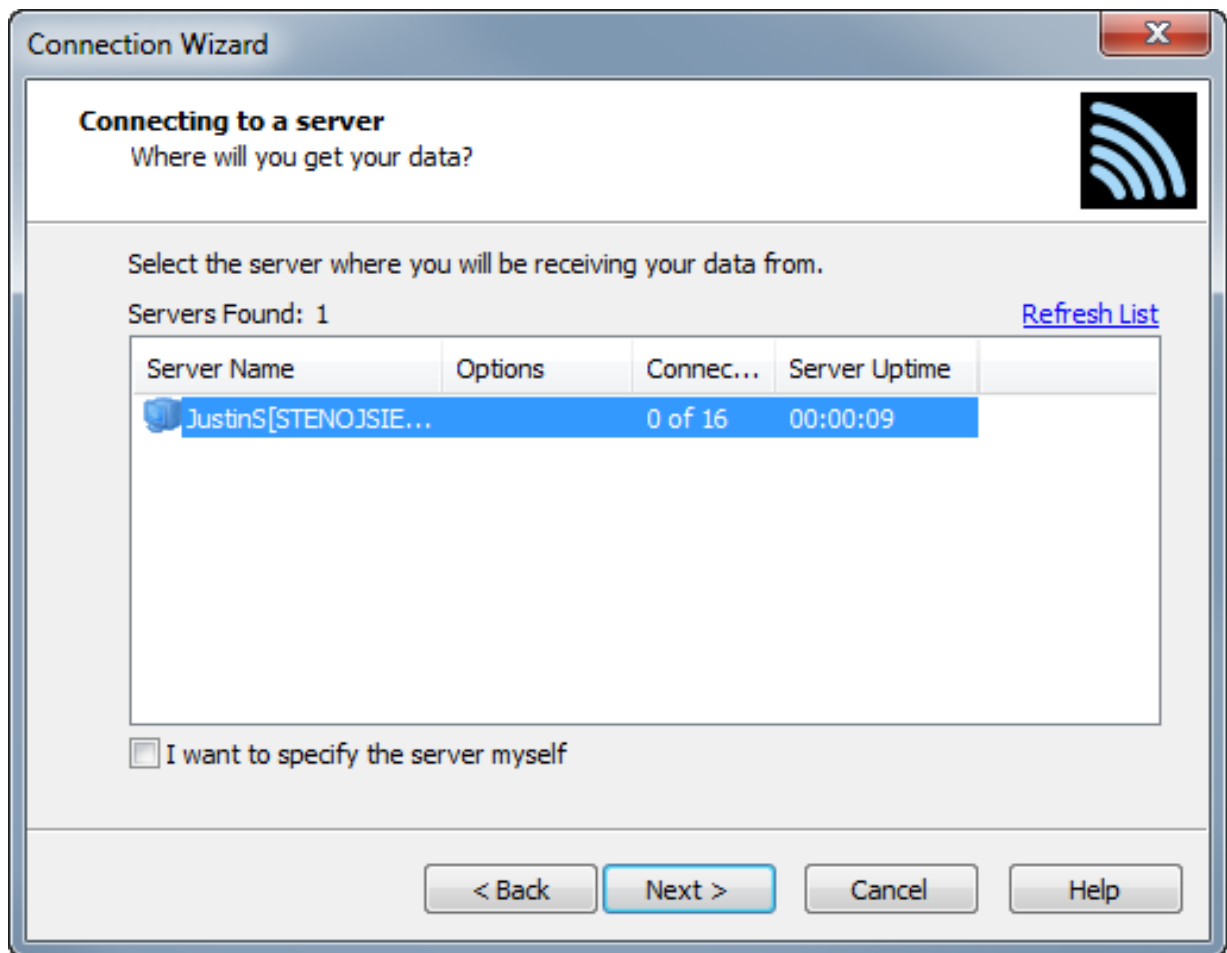
3. In the Creating a connection screen, select Network and click **Next**.



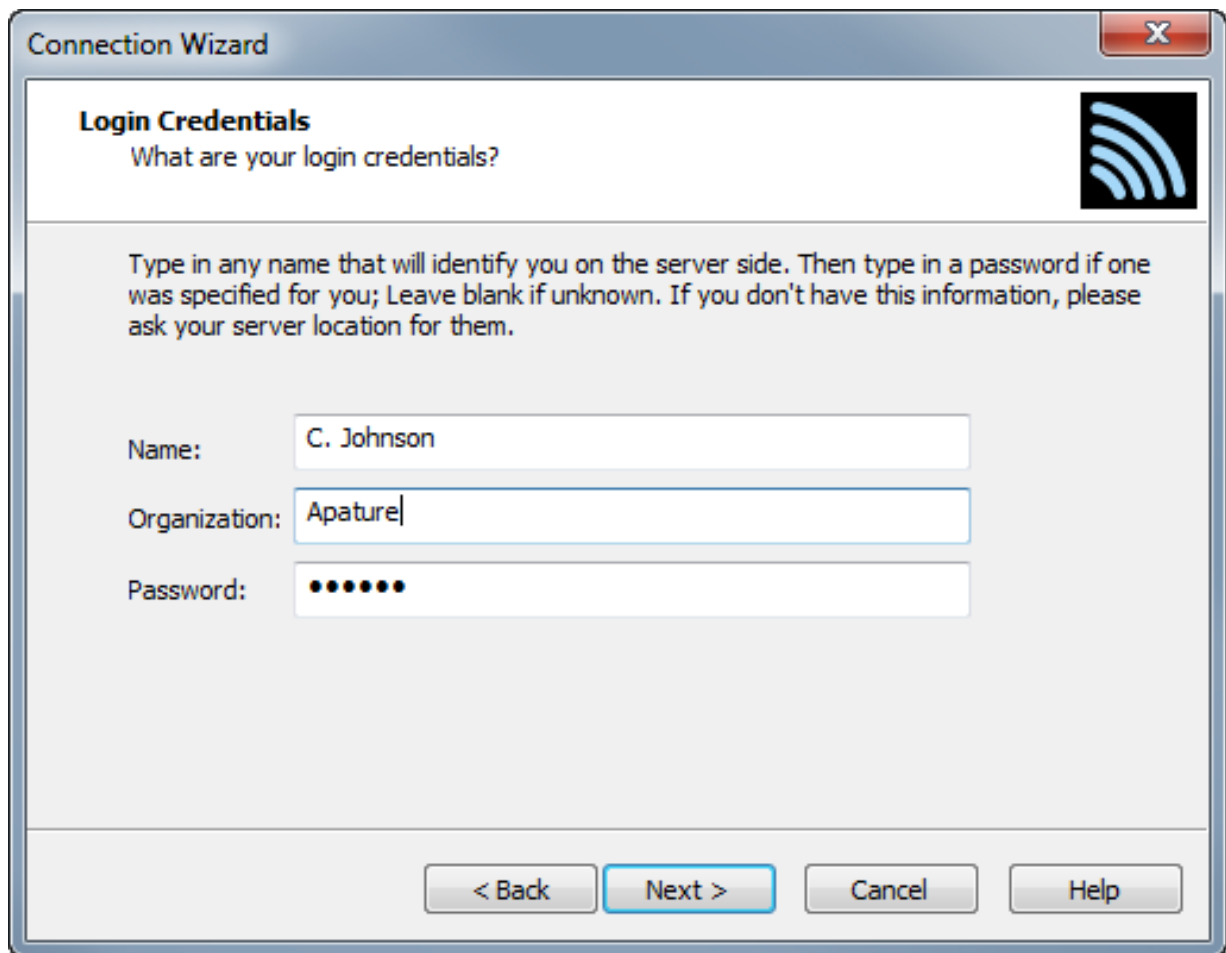
4. Click **Next** at the Setting up your options screen.



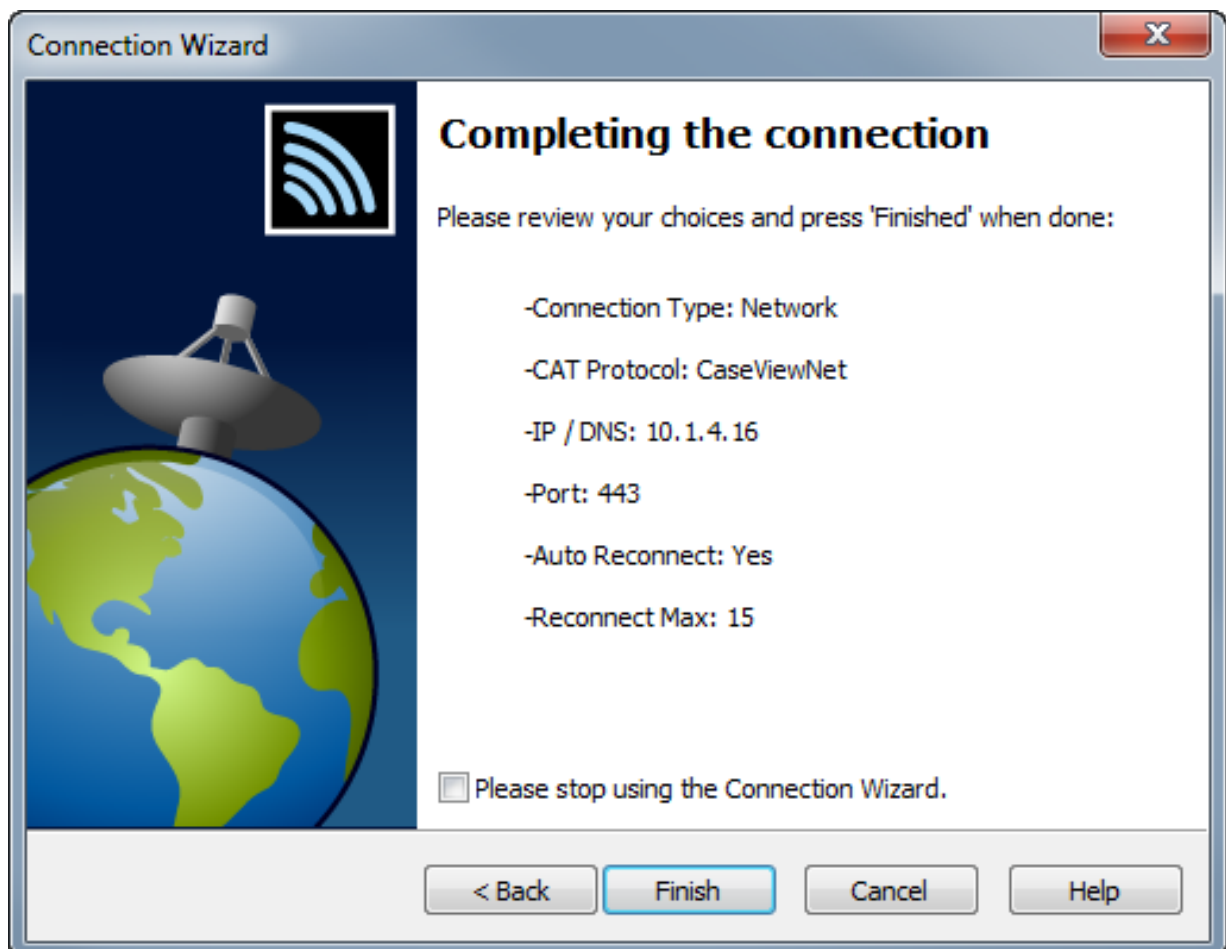
5. Select the server which is the reporter's computer and click **Next**.



6. At the Login Credentials screen type in your Name, Organization, the password provided by the reporter. Click **Next**.



7. Click **Finish** at the Completing the connection screen.



8. The wizard will close and CaseViewNet will be receiving the feed.

Troubleshooting Tips

- Verify that the computer is connected to the network.
- If there is a network connection but CaseViewNet is not connecting, check the password was typed correctly.
- Reboot the computer, and run the connection wizard again.

Article ID: 70

Last updated: 07 Oct, 2014

Revision: 2

Caseview/CaseViewNet -> CaseViewNet -> Using CaseViewNet via Network Connection

<http://www.stenographsolutions.com/solution/index.php?View=entry&EntryID=70>